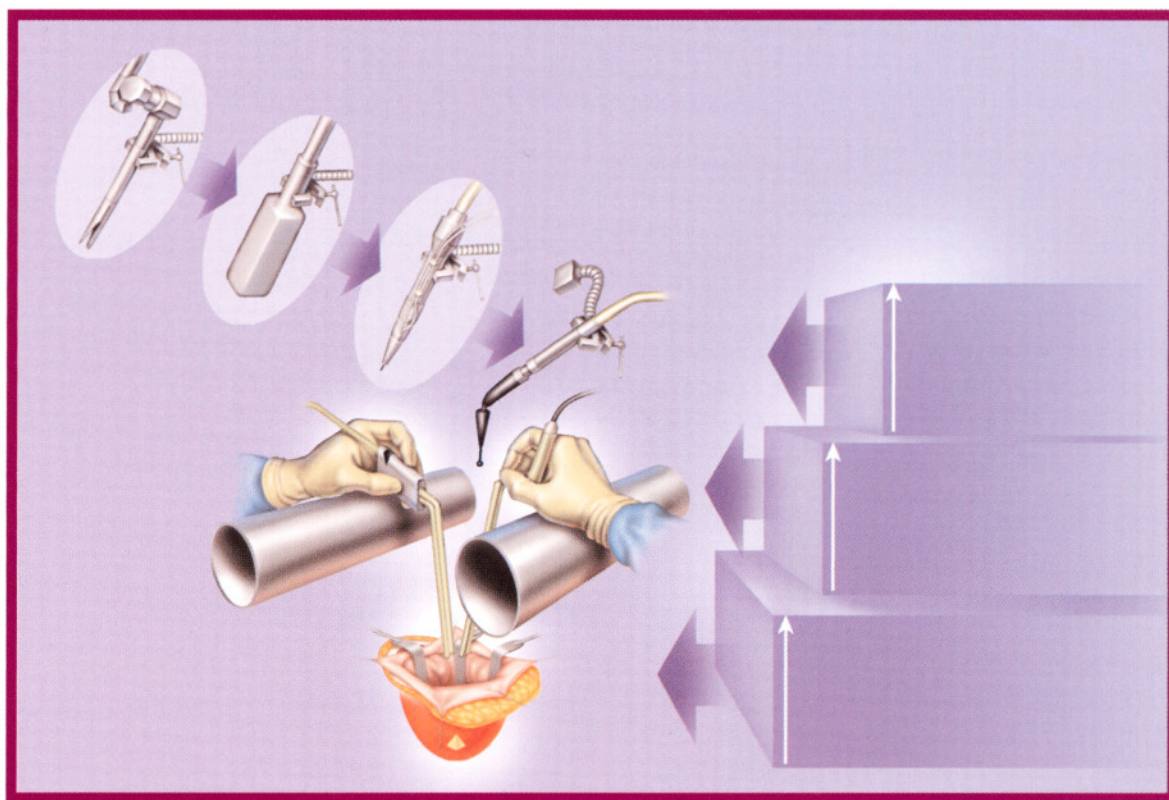
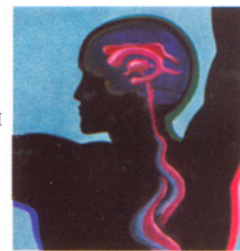


CODMAN® GREENBERG™

RETRACTOR AND HANDREST



A UNIVERSAL SYSTEM™

Codman

The GREENBERG Retractor and Handrest is a versatile, three level system offering efficient space planning, whereby each level has an assigned surgical task.

Level II is always mounted above Level I.

By utilizing Level II for every case, with each hand supported on its own handrest, one achieves complete independence of subtle, constantly required changes in position or depth in the surgical field.

By this separation we bring order to the surgical work, where form does follow function.

We thus perform with greater relaxation yet are afforded more control and less tremor and fatigue.

This is our ultimate goal, to provide ergonomic efficiency.

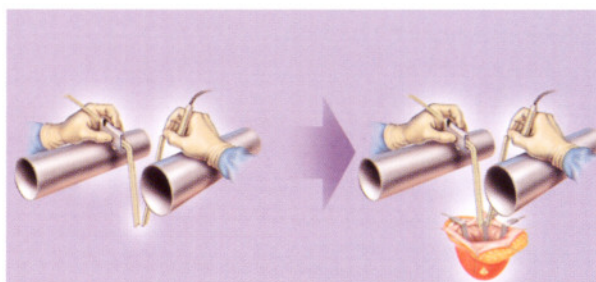
LEVEL III

Made for instruments mounted above handrests.



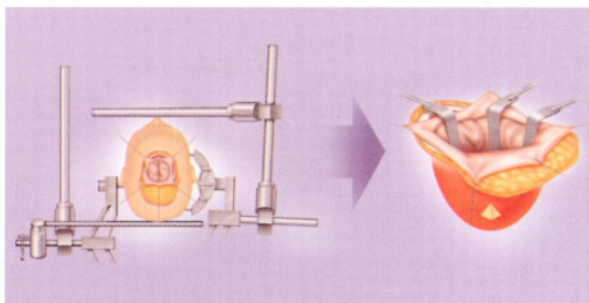
LEVEL II

This level has one function - handrests for surgeon support. Short couplers equal A and B.



LEVEL I

This is the level at which the system is attached to either the headrest or the railing of the operating room table and is the physical foundation of the system. The function at this level is to create a stable perimeter about the operative field for mechanical support of normally hand-held instruments. The surgical tasks at this level consist primarily of retraction, dissection, and suction.



To order call 1-800-255-2500

A UNIVERSAL SYSTEM

The constantly adjustable handrest provides steady support for precise maneuvers and helps to reduce fatigue by allowing relaxation of arm and shoulder muscles.



GREENBERG Tapered Retractor Blades
Both ends can be used for retraction. Attaches to GREENBERG Long Arm (50-1509) or GREENBERG Short Arm (50-1511)
Blade Length-9" (229mm)

50-1530 1/4" x 3/4" (6mm x 19mm)

50-1531 5/32" x 5/8" (4mm x 16mm)

50-1532 1/8" x 1/2" (3.2mm x 12.7mm)

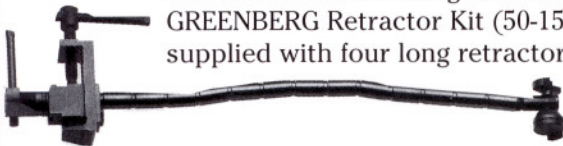
50-1533 3/32" x 3/8" (2.4mm x 9.5mm)

50-1534 1/16" 1/4" (1.6mm x 6mm)



50-1507 GREENBERG Primary Bar attaches to skull clamp GREENBERG Retractor Kit (50-1500) is supplied with two primary bars.

50-1509 GREENBERG Long Retractor Arm attaches to floating secondary bars. GREENBERG Retractor Kit (50-1500) is supplied with four long retractor arms.



50-1513 GREENBERG Pattie Tray attaches to long or shortarm (50-1509 or 50-1511)



Secondary Bar

50-1529 GREENBERG Micro Instrument Holder is a flexbar arm used to hold micro instruments used repeatedly within retracted fields. Holds instruments with shafts up to 1/8" in diameter.

To order call 1-800-255-2500

To order call 1-800-255-2500

RETRACTOR SYSTEM

The constantly adjustable handrest provides steady support for precise maneuvers and helps to reduce fatigue by allowing relaxation of arm and shoulder muscles.



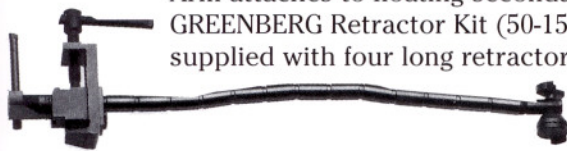
50-1512 GREENBERG Handrest attaches to short coupler (50-1522) or a secondary bar (50-1508 or 50-1516)



50-1507 GREENBERG Primary Bar attaches to skull clamp GREENBERG Retractor Kit (50-1500) is supplied with two primary bars.



50-1516 GREENBERG Floating Secondary Bar Attaches to Primary Bar (50-1506) or Secondary Bar (50-1508) or Short Coupler (50-1522). Can also be mounted onto a flat metal edge of up to 1/2" thickness incorporates a universal joint enabling conical adjustment of angle.



50-1509 GREENBERG Long Retractor Arm attaches to floating secondary bars. GREENBERG Retractor Kit (50-1500) is supplied with four long retractor arms.



50-1522 GREENBERG Short Coupler should be used to mount the GREENBERG Handrest(50-1512) to the floating secondary at Level I.

50-1513 GREENBERG Pattie Tray attaches to long or shortarm (50-1509 or 50-1511)



To order call 1-800-255-2500

A UNIVERSAL SYSTEM



50-1523 GREENBERG Small Instrument Holder is a flexbar arm used when greater holding force than that offered by the Micro Instrument Holder (50-1529) is needed. Holds instruments with shafts up to 5/16" in diameter and flat instruments.



GREENBERG Tapered Retractor Blades
Both ends can be used for retraction. Attaches to GREENBERG Long Arm (50-1509) or GREENBERG Short Arm (50-1511)
Blade Length-9" (229mm)

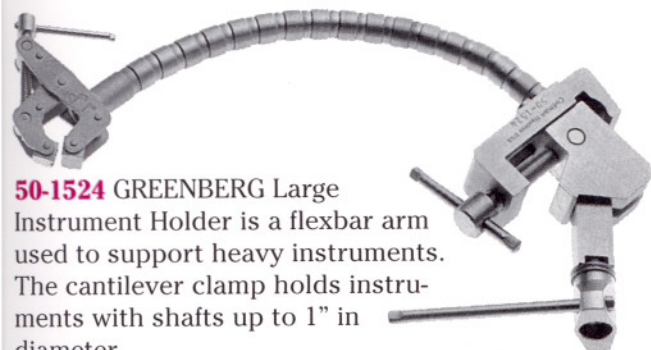
50-1530 1/4" x 3/4" (6mm x 19mm)

50-1531 5/32" x 5/8" (4mm x 16mm)

50-1532 1/8" x 1/2" (3.2mm x 12.7mm)

50-1533 3/32" x 3/8" (2.4mm x 9.5mm)

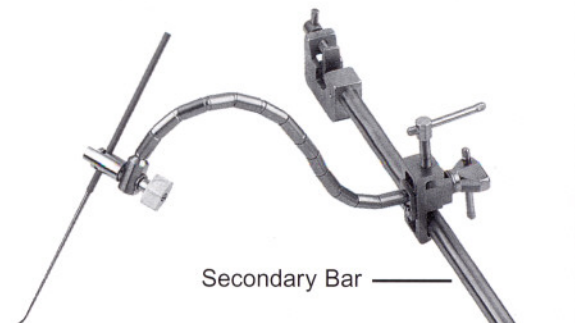
50-1534 1/16" 1/4" (1.6mm x 6mm)



50-1524 GREENBERG Large Instrument Holder is a flexbar arm used to support heavy instruments. The cantilever clamp holds instruments with shafts up to 1" in diameter.



50-1525 GREENBERG Universal Retractor System X-large Instrument Holder holds instruments up to 2" in diameter.



50-1529 GREENBERG Micro Instrument Holder is a flexbar arm used to hold micro instruments used repeatedly within retracted fields. Holds instruments with shafts up to 1/8" in diameter.

To order call 1-800-255-2500

ORDERING INFORMATION

50-1500 GREENBERG Universal Retractor and Handrest Kit includes the following:

50-1507 GREENBERG Primary Bar. Length 6" (152mm). GREENBERG Retractor Kit is supplied with two primary bars. Primary bars attach to skull clamp.

50-1508 GREENBERG Secondary Bar. Length 12" (305mm). Kit is supplied with four secondary bars. Secondary bars attach to primary bar.

50-1509 GREENBERG Long Retractor Arm. Length 9 1/2" (241mm). Kit is supplied with four long retractor arms that attach to primary or secondary bars.

50-1512 GREENBERG Handrest Length 10" (254mm). The GREENBERG Handrest attaches to short coupler (50-1522 or a secondary bar (50-1508) or 50-1515).

50-1513 GREENBERG Pattie Tray. Width 3" (76mm) Length 6 3/4" (171mm). Pattie Tray attaches to long or short arm (50-1509 or 50-1511).

50-1514 GREENBERG Universal Retractor Case, with four compartments to hold various components.

COMPARTMENT DIMENSIONS

Compartment # 1

Length 10 3/8" (264mm)

Width 7 3/4" (197mm)

Compartment # 2

17" (432mm)

2 1/8" (54mm)

Compartment # 3

Length 6 3/4" (171mm)

Width 4 5/8" (117mm)

Compartment # 4

6 3/4" (171mm)

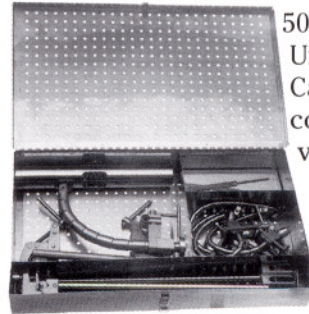
3 1/8" (79mm)

Case Dimensions

Length 17" (432mm)

Width 10" (254mm)

Depth 2 3/8" (60mm)



50-1514 GREENBERG Universal Retractor Case, with four compartments for various components.

50-1508 GREENBERG Secondary Bar. Length 12" (305mm). Kit is supplied with four secondary bars. Secondary bars attach to primary bars and each other and create a box around the surgical field.

GREENBERG Tapered Retractor Blades

Length

Blade widths

50-1530 9" (229mm)

1/4" x 3/4" (6mm x 19mm)

50-1531 9" (229mm)

5/32" x 5/8" (4mm x 16mm)

50-1532 9" (229mm)

1/8" x 1/2" (3mm x 13mm)

50-1533 9" (229mm)

3/32" x 3/8" (2mm x 10mm)

50-1534 9" (229mm)

1/16" x 1/4" (1.6mm x 19mm)

Blades mount onto Long Arm (50-1509) or Short Arm (50-1511)

Codman

a *Johnson & Johnson* company

For more information, contact your Codman Sales Representative

325 PARAMOUNT DRIVE • RAYNHAM, MA 02767 • (508) 880-8100
FOR PRODUCT INFORMATION, CALL: (800) 225-0460

To order call 1-800-255-2500